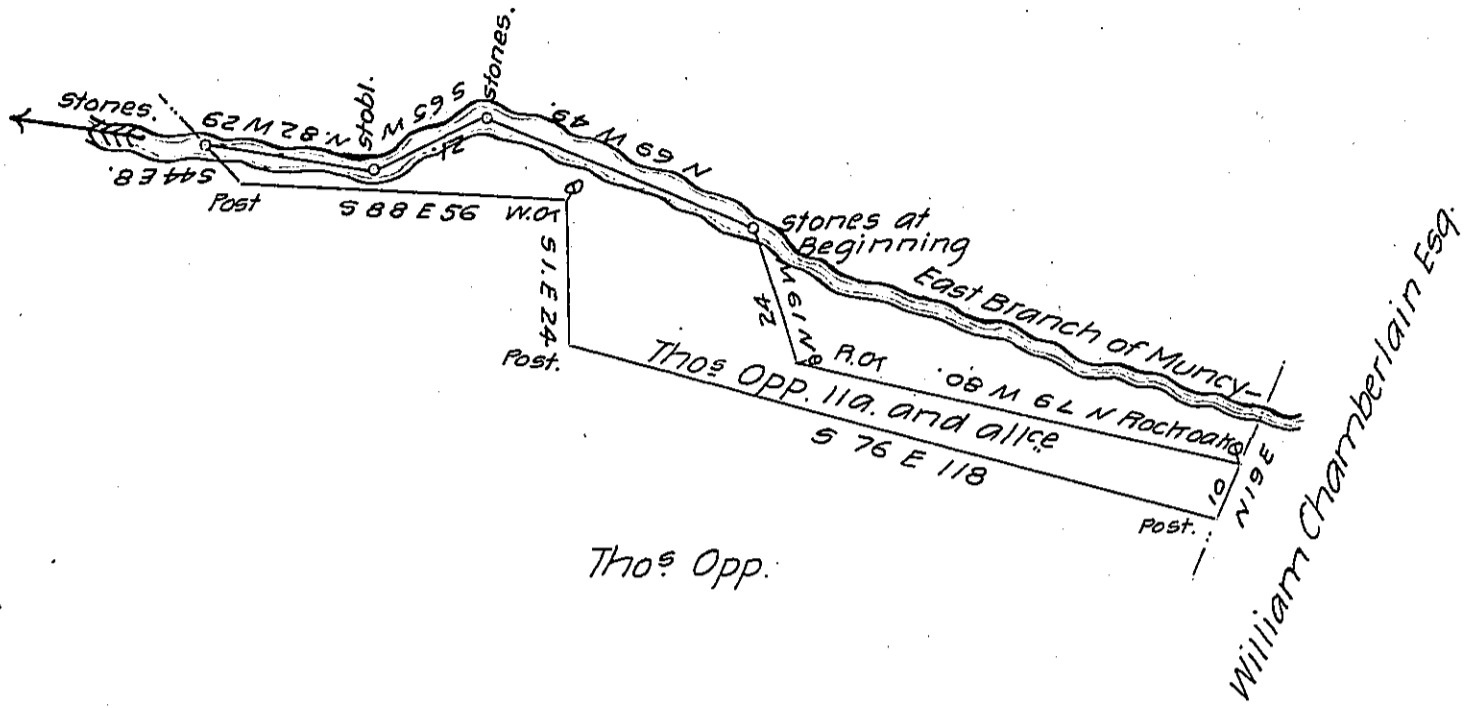


Jonathan Smith



Draught of a tract of land situate in Moreland Township Lycom-  
 ing Cty. on the east Branch of Murcy Creek, Containing 11 acres and  
 allce of six per ct for Roads &c Surveyed on the 7th day of May 1834 for  
 Thomas Opp in pursuance of his Warrant for 10 acres dated March  
 the 3d 1834.

David Hanna D.S.

To Jacob Spangler Esq  
 Surveyor General.

IN TESTIMONY that the above is a copy of the original remaining on file in  
 the Department of Internal Affairs of Pennsylvania, made  
 conformably to an Act of Assembly approved the 16th day of  
 February, 1833, I have hereunto set my Hand and caused  
 the Seal of said Department to be affixed at Harrisburg,  
 this first day of June 1906.

*Loach D. Brown*  
 Secretary of Internal Affairs.